



Changing Behaviours **Predictive Maintenance**

consulting
sales
service
support



Change Behaviour

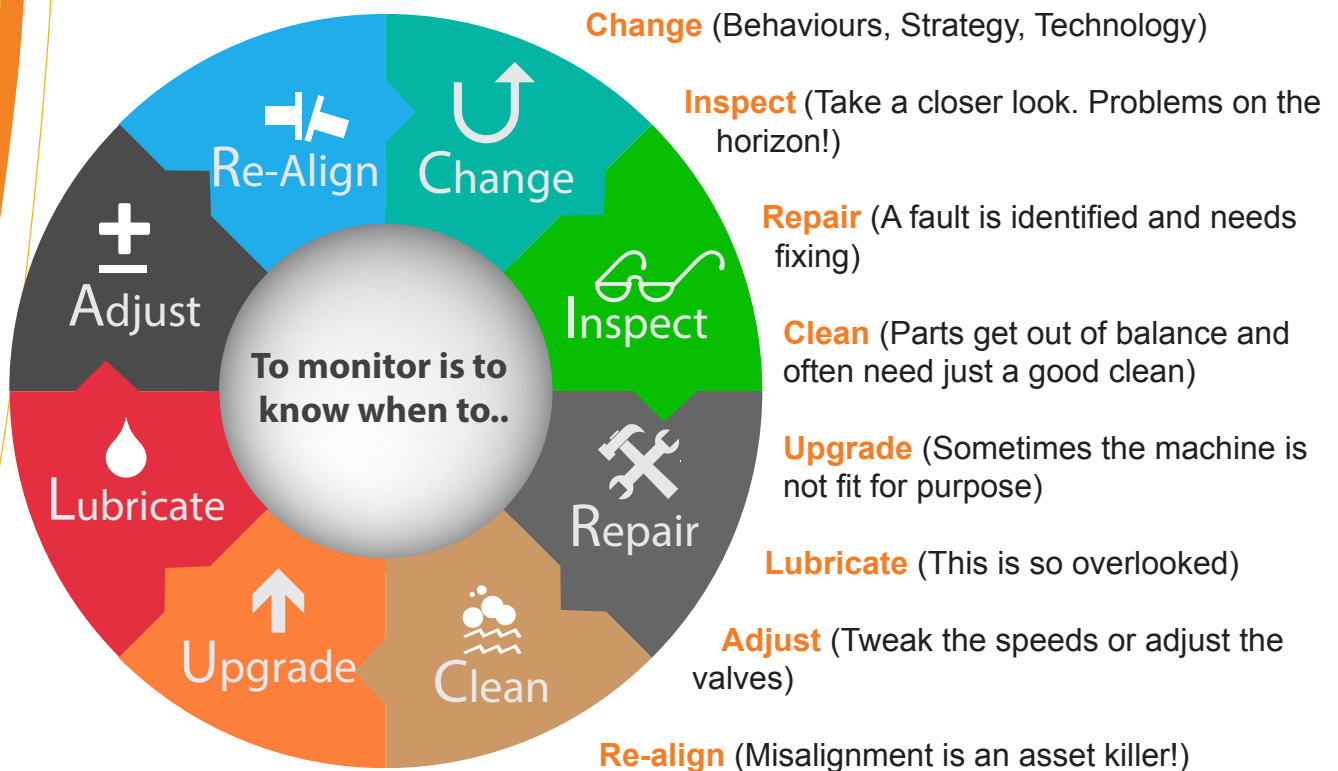
**“IF YOU DO WHAT YOU ALWAYS DID,
THEN YOU WILL ALWAYS GET
WHAT YOU ALWAYS GOT”**

At PdM Reliability we don't just provide a service, but also have philosophy around reliability centred maintenance and condition monitoring. We align ourselves with your organisations strategies around reliability and performance improvements, having a strong background in training and development in reliability systems, we can help change the

behaviour of personel who have an impact in the reliability of the plant. We achieve this is by identifying key people with influence over the running of the plant and its upkeep. We do this in a persuasive manner so as not to alienate people's current thoughts and practices, but to educate them using condition monitoring data and identifying problems to help demonstrate the root cause of the problem we find people embrace this approach and are motivated to better understand the philosophy.

Every plant has its known problem areas and repeat offenders, and by using condition monitoring we can identify the root cause

To monitor is to know when to.....



Uptime is the driver reliability is the key

CONDITION MONITORING



PdM Reliability use the latest Emerson CSI 2140 analyser to carry out vibration analysis which is the cornerstone of any predictive maintenance/condition monitoring programme. Other technologies we provide that complement this are oil and infrared analysis. If you can measure a machines condition heartbeat over time, and it is working within normal parameters, it should last the life span of the asset. Unfortunately in the real world this is not the case, but knowing when the condition has changed we can recommend the corrective action to bring it back to normal operations. If this cannot be achieved then we have timeline to work to minimise the effect of the failing machine.

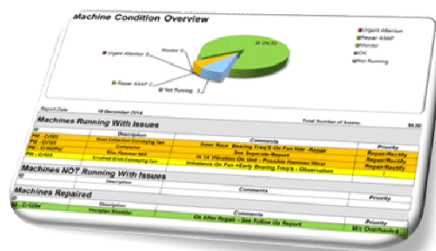


OIL ANALYSIS

Oil analysis (OA) is the laboratory analysis of a lubricant's properties, suspended contaminants, and wear debris. OA is performed during routine predictive maintenance to provide meaningful and accurate information on lubricant and machine condition. By tracking oil analysis sample results over the life of a particular machine, trends can be established which can help eliminate costly repairs. The study of wear in machinery is called tribology. Tribologists often perform or interpret oil analysis data..

VISIBILITY THROUGH TRENDING

It is important to quickly analyse and report on the assets health, and by trending the heartbeat of the machine we can quickly ascertain its condition. Like most condition monitoring companies we use a traffic light system to flag up any abnormalities, but where we differ at PdM Reliability is that we follow up with a detailed in-depth report and recommended actions, not only that but we feel strongly on the metrics that fall out of this data that identify any repeating problems and mean-time between failures. Our philosophy is "if you can measure it, you can improve it". We carry out cost benefit analysis to help you realise the potential savings your reliability program is generating and not just a rubber stamping exercise



INDUSTRY SECTORS

- POWER GENERATION.
- MANUFACTURING.
- OIL AND PETROCHEMICAL .
- FOOD & DRINK
- WIND TURBINE.
- PAPER MILLS
- AGGREGATES



Technologies

- Vibration Analysis
- Oil Analysis
- Ultrasonics
- IR Thermography.



Types of Equipment

- AC /DC MOTORS
- FANS
- PUMPS
- GEARBOXES
- COMPRESSORS
- PAPER MACHINES
- PULP PRESSES
- WIND TURBINES
- DRUM DRYERS
- TRUNION BEARINGS
- CENTRIFUGES



CONSULTING
SALES
SERVICE
SUPPORT



9 Hanbury Close
Doncaster
DN4 9AN
South Yorkshire
01302 637437 Office
www.pdm-reliability.com